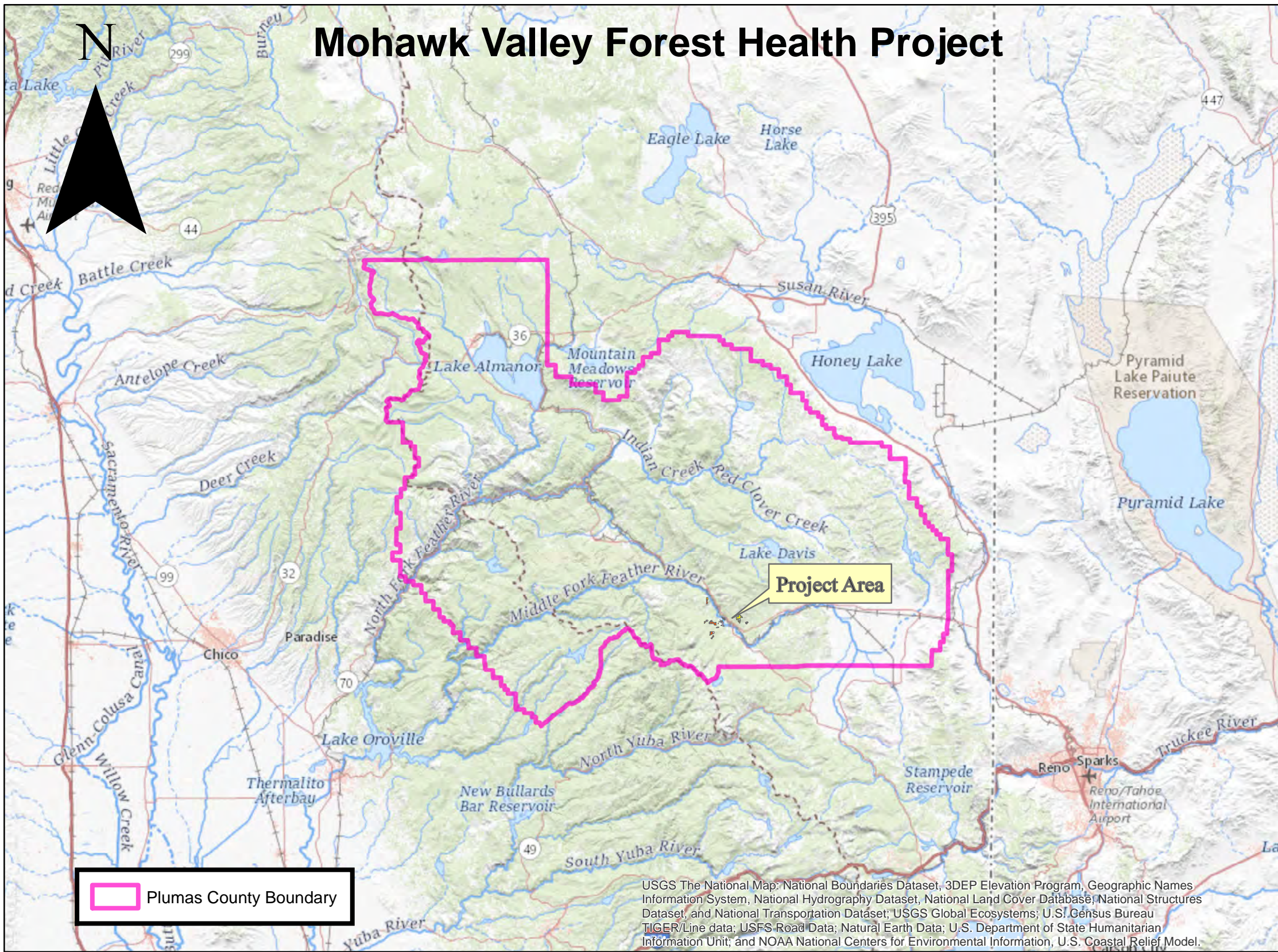
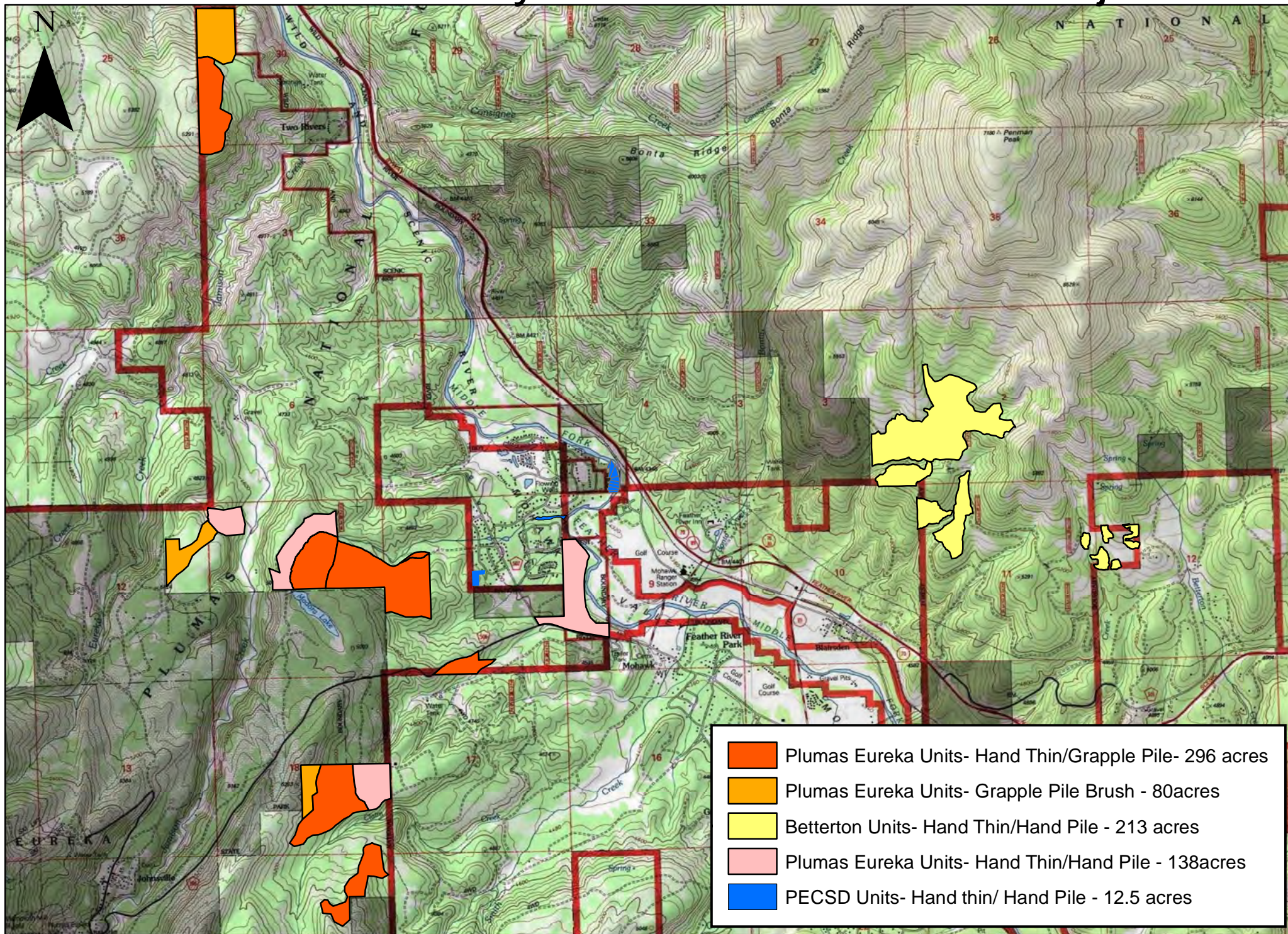


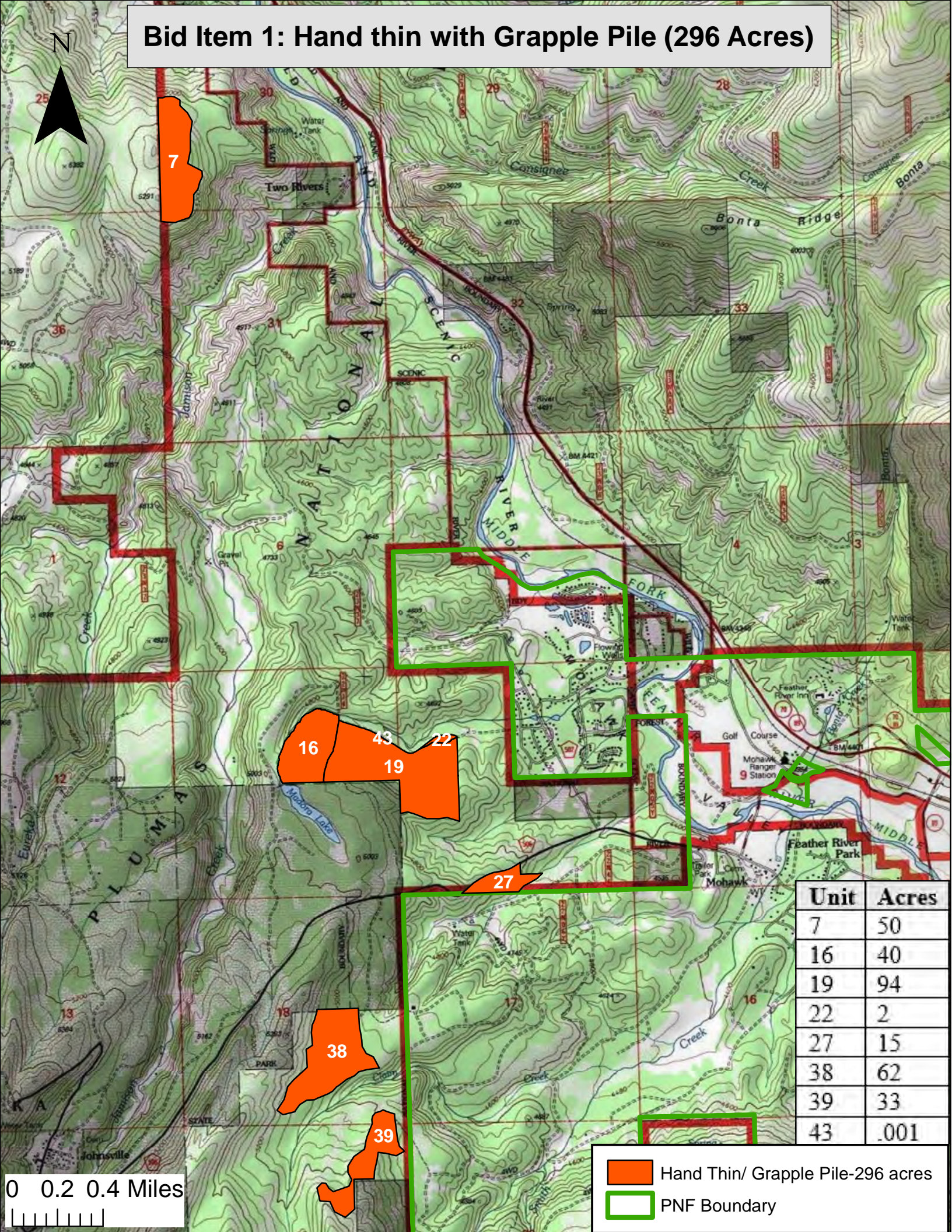
Mohawk Valley Forest Health Project



Mohawk Valley Wildfire Resilience Project



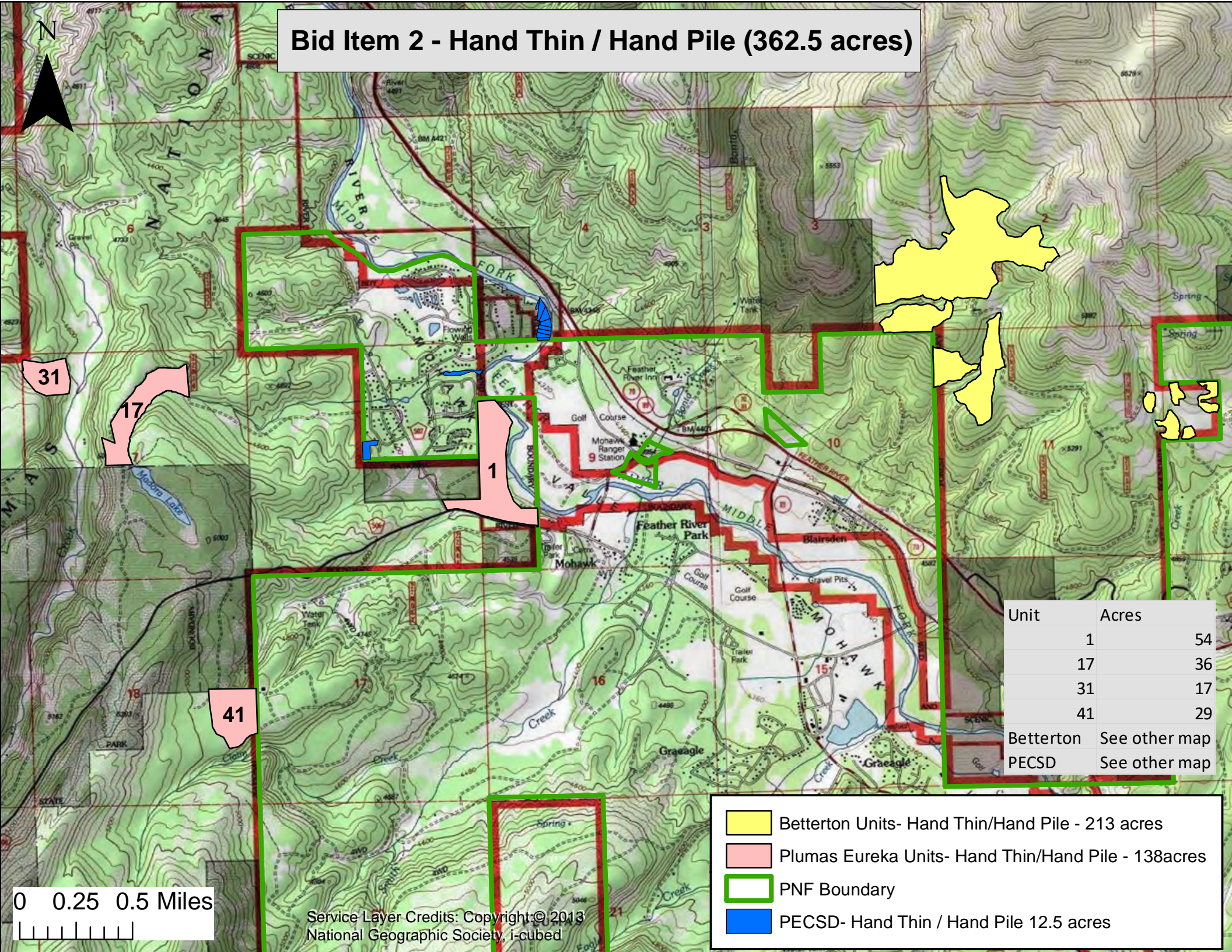
Bid Item 1: Hand thin with Grapple Pile (296 Acres)



0 0.2 0.4 Miles

Hand Thin/ Grapple Pile-296 acres
PNF Boundary

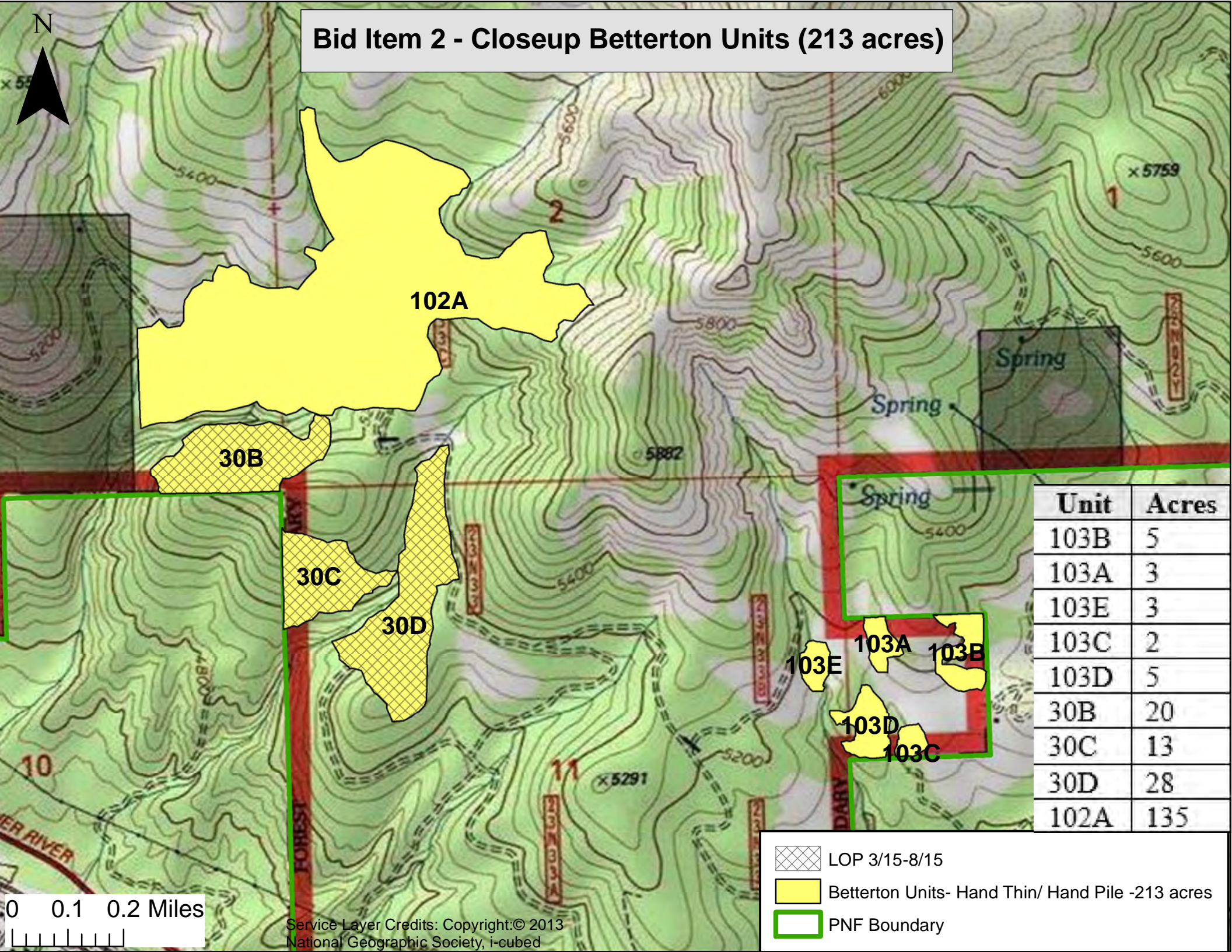
Bid Item 2 - Hand Thin / Hand Pile (362.5 acres)




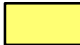

Unit	Acres
1	54
17	36
31	17
41	29
Betterton	See other map
PECSD	See other map

- Betterton Units- Hand Thin/Hand Pile - 213 acres
- Plumas Eureka Units- Hand Thin/Hand Pile - 138acres
- PNF Boundary
- PECSD- Hand Thin / Hand Pile 12.5 acres

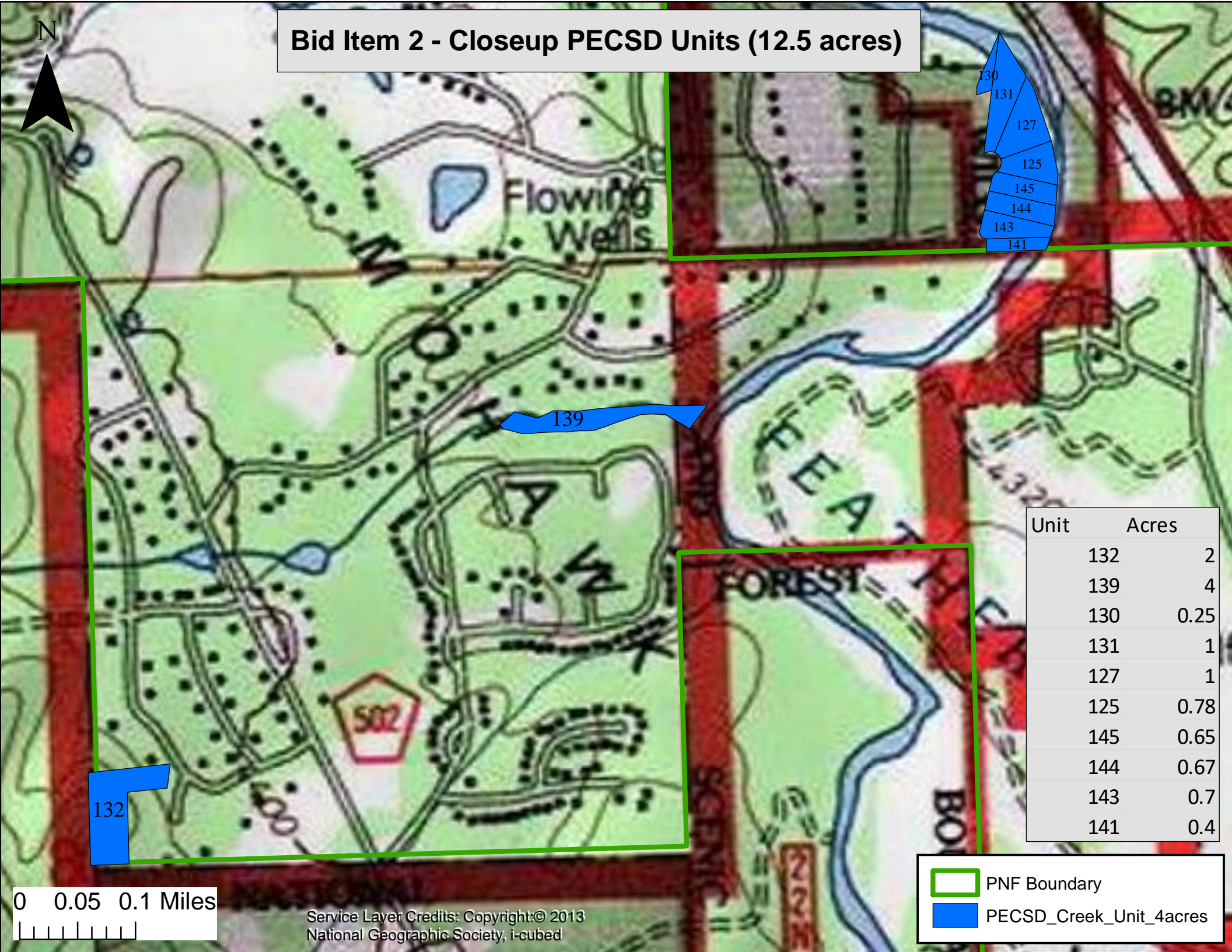
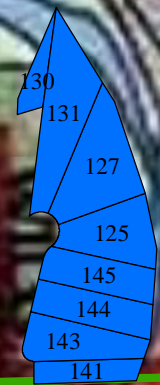
Bid Item 2 - Closeup Betterton Units (213 acres)



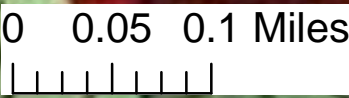
Unit	Acres
103B	5
103A	3
103E	3
103C	2
103D	5
30B	20
30C	13
30D	28
102A	135

-  LOP 3/15-8/15
-  Betterton Units- Hand Thin/ Hand Pile -213 acres
-  PNF Boundary


Bid Item 2 - Closeup PECSD Units (12.5 acres)




Unit	Acres
132	2
139	4
130	0.25
131	1
127	1
125	0.78
145	0.65
144	0.67
143	0.7
141	0.4

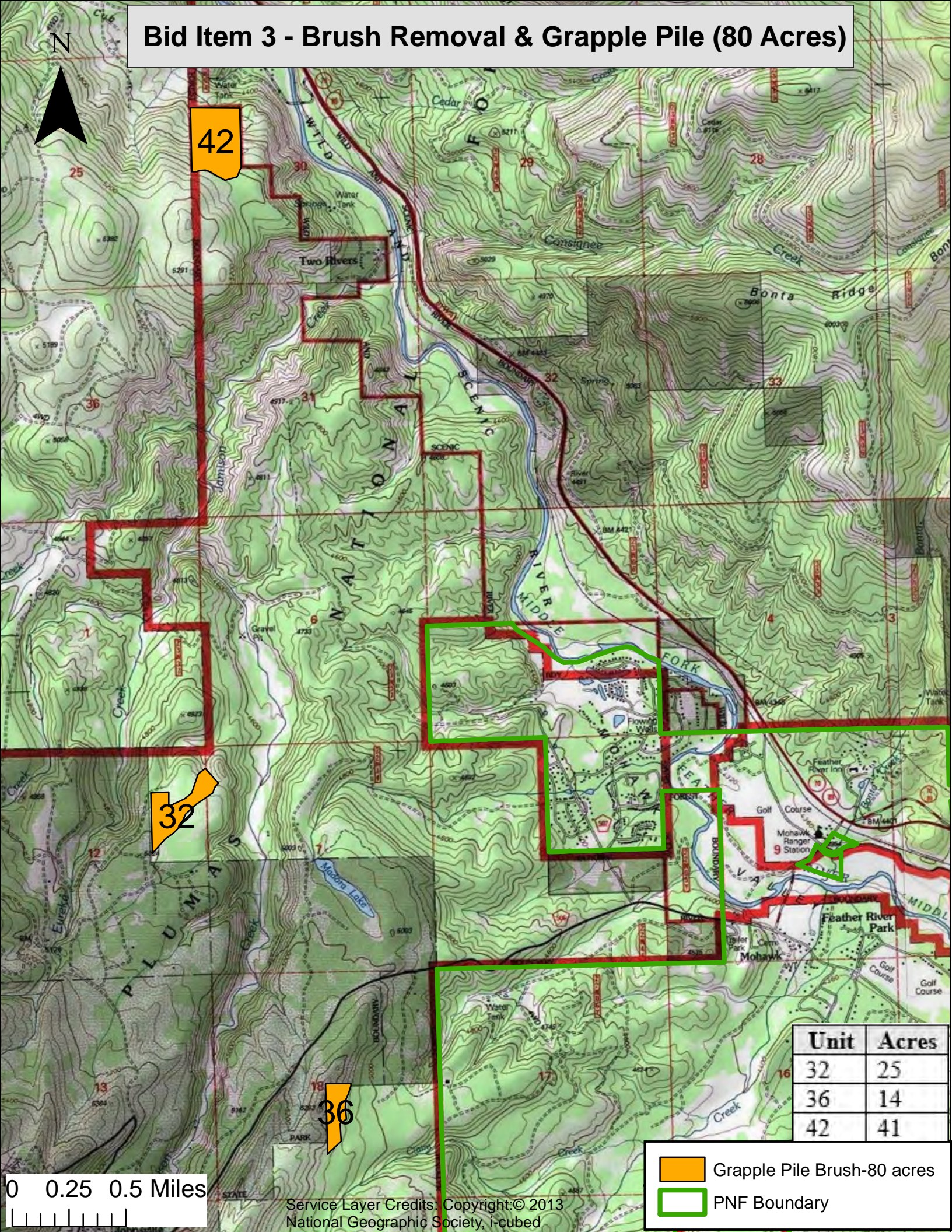


Service Layer Credits: Copyright© 2013
National Geographic Society, i-cubed

 PNF Boundary

 PECSD_Creek_Unit_4acres

Bid Item 3 - Brush Removal & Grapple Pile (80 Acres)



Unit	Acres
32	25
36	14
42	41

- Grapple Pile Brush-80 acres
- PNF Boundary

0 0.25 0.5 Miles

Service Layer Credits: Copyright © 2013 National Geographic Society, i-cubed